

BASE VTT



Départ : Office du tourisme

A voir ou à visiter

CHAOURCE (église) :

- La mise au tombeau.
- L'orgue.
- La crèche.

CHAOURCE

- La fromagerie.
- Le musée du fromage.
- Le château de la Cordelière (golf).

CUSANGY (lavoir roma).

Les Poteries :

- La ronde des feux (W- Pentecôte).



CHAOURCE

3

Circuit




Distance : 24 km.

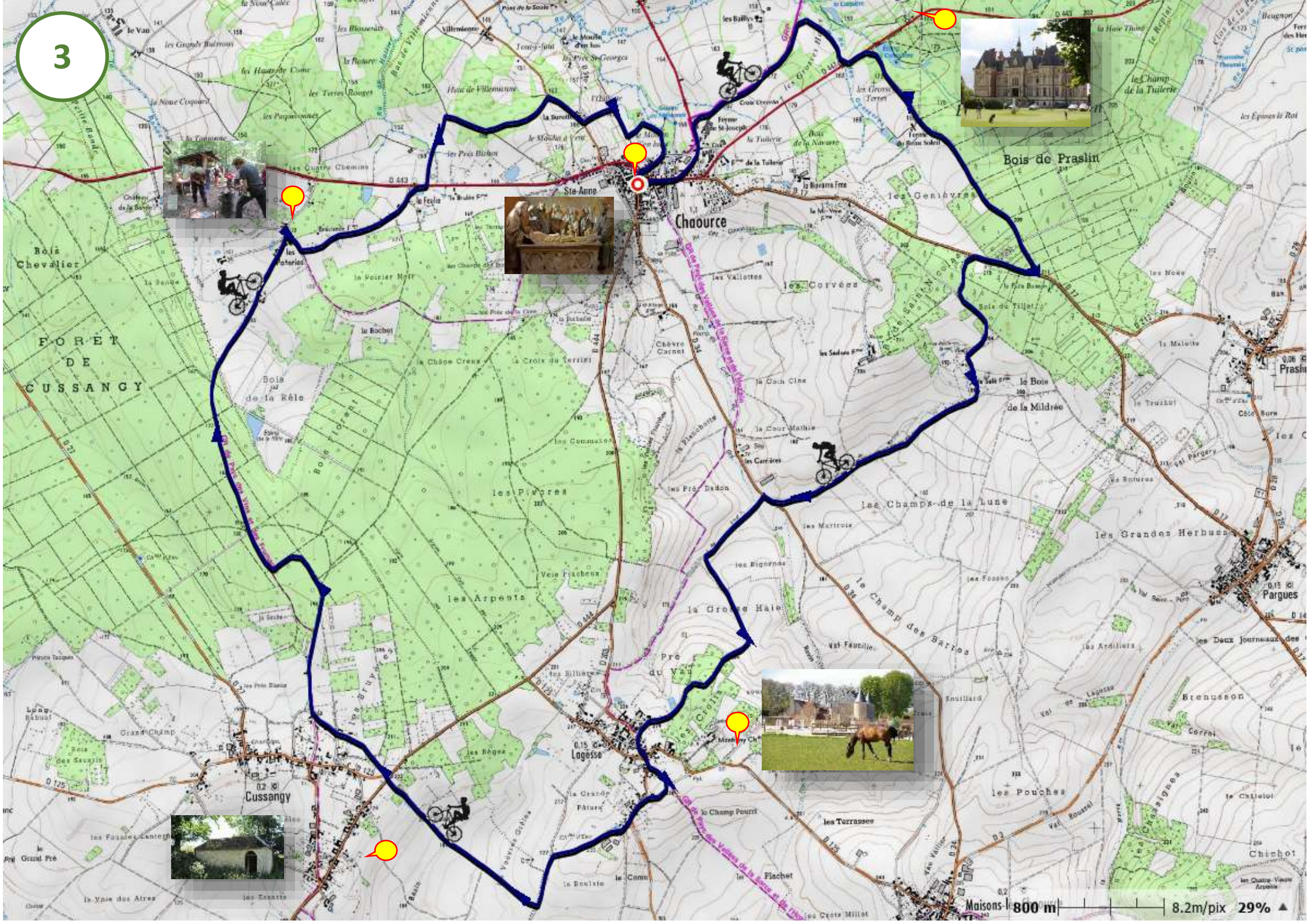
Dénivelé : 230 m.

Balilage : 

Niveau : 

Localisation photos : 




3



<p>2,020 km</p> <p>5 Petit sentier</p>	<p>4,890 km</p> <p>10</p>	<p>8,400 km</p> <p>15 D34</p>	<p>11,090 km</p> <p>20 GR </p>	<p>11,930 km</p> <p>25</p>	<p>14,950 km</p> <p>30</p>
<p>1,570 km</p> <p>4</p>	<p>4,200 km</p> <p>9</p>	<p>6,720 km</p> <p>14 Le salé Ferme</p>	<p>10,950 km</p> <p>19 Lagesse</p>	<p>11,740 km</p> <p>24 D 202</p>	<p>14,670 km</p> <p>29 D 444</p>
<p>0,860 km</p> <p>3 Quitter la D 444</p>	<p>2,130 km</p> <p>8 fil électrique</p>	<p>6,070 km</p> <p>13</p>	<p>10,640 km</p> <p>18</p>	<p>11,530 km</p> <p>23 D 125</p>	<p>13,030 km</p> <p>28 Point liaison</p>
<p>0,290 km</p> <p>2</p>	<p>3,43 km</p> <p>7 Ferme Beau Soleil</p>	<p>5,740 km</p> <p>12</p>	<p>9,180 km</p> <p>17</p>	<p>11,320 km</p> <p>22 suivre le Gr </p>	<p>12,620 km</p> <p>27</p>
<p>0,000 km</p> <p>1 Départ O-Tourisme</p>	<p>10</p> <p>10</p>	<p>5,430 km</p> <p>11</p>	<p>8,530 km</p> <p>16</p>	<p>11,250 km</p> <p>21</p>	<p>12,030 km</p> <p>26</p>

<p>16,210 km</p> <p>35</p>	<p>19,710 km</p> <p>39 Les Poteries</p>	<p>21,900 km</p> <p>44</p>	<p>23,440 km</p> <p>50</p>	<p>24,110km</p> <p>55</p>
<p>16,210 km</p> <p>34 Suivre GR</p>	<p>18,600 km</p> <p>38 suivre le GR</p>	<p>21,600 km</p> <p>43</p>	<p>23,240 km</p> <p>48</p>	<p>23,920 km</p> <p>53</p>
<p>15,920 km</p> <p>33</p>	<p>17,310 km</p> <p>38 suivre le GR</p>	<p>20,900 km</p> <p>42</p>	<p>23,000 km</p> <p>47</p>	<p>23,920 km</p> <p>53</p>
<p>15,500 km</p> <p>32</p>	<p>17,000 km</p> <p>37</p>	<p>20,640 km</p> <p>41 La Feulie</p>	<p>22,740 km</p> <p>46</p>	<p>23,880 km</p> <p>52</p>
<p>15,260 km</p> <p>31</p>	<p>16,740 km</p> <p>36</p>	<p>19,900 km</p> <p>40 Quitter le GR</p>	<p>22,420 km</p> <p>45 D 34</p>	<p>23,760 km</p> <p>51</p>

Légende:





Routes:  Chemins/sentiers  GR 

Directions:   Mauvaises directions: 

Les constructions humaines:


 Églises/chapelles  Croix  Ponts  Maisons  Mairies  Chemins de fer

Les indications:

 Pique-nique  Parking  Camping  Points de vues

L'eau:

 Rus/rivières:  châteaux d'eau:  Lacs/étangs).

Végétation (bois/forêt): 

Un rando-Guide se lit de bas en haut.